



Ford CNG Bi-Fuel/Dedicated F-250/350 Super Duty Truck

As a Ford QVM Altech-Eco has Engineered a Seamlessly Integrated and Superior CNG Powered System that Delivers Excellent Horsepower, Torque, Towing Capacity, Ultimate Load Situations and will Perform in Extreme Cold, Extreme Heat and High or Low Altitudes.

By Using an Altech-Eco CNG Converted Vehicle You will have a Positive Impact on Americas Air Quality, Energy Independence, Security and Environment. Now Available at Ford Dealers and Installers Nationwide.



ALTECH-ECO CNG SYSTEM SPECIFICATIONS

- 6.2L V8 with Gaseous Prep Engine Package.
- All Models and Trims Available. 4x2, 4x4, Regular Cab, Super Cab, Crew Cab, XL, XLT, Lariat, King Ranch, Bed-Delete, Short Bed and Long Bed.
- Meets EPA and CARB Certification Standards.
- Bi-Fuel and Dedicated Options Available.
- Standard 12.6, 21.2 or 31.6 GGE (Gasoline Equivalent) Type 4 CNG Fuel Tanks.
- CNG Fuel Economy Equivalent to Gasoline.
- Original Ford Warranty Remains Intact.
- 80,000 Mile/8 Year Emission Components Warranty.
- Bi-fuel Option Runs on CNG or Gasoline, Switch Between Fuels at Any Time.
- Serviceable Through Ford Dealer Network with Standard Ford Diagnostic Equipment.
- Equipped with Ford On-Board Computer Control System.
- Proprietary Fuel Delivery System.
- Maintains OBD-II Functionality.
- Comes with Standard Metal CNG Tank Cover or Optional Diamond Plate Tool Box Cover.

Ford CNG Bi-Fuel / Dedicated F-250/350 Super Duty Truck



by Altech-Eco

BENEFITS FROM USING CNG

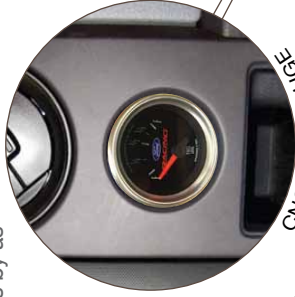
- Helping Make America Less Dependent on Foreign Oil is a National Priority.
- Non-Toxic, Burns Cleaner, Reduces Urban Smog, and Produces Lower Levels of Harmful Pollutants.
- Contains No Particulates and Reduces Emissions of Carbon Dioxide, which is the Principal Greenhouse Gas.
- Reduced Maintenance Costs by as much as 40%.
- Fuel Cost Savings up to 50%.
- Safer to Use than Gasoline and Diesel.

RELIABILITY

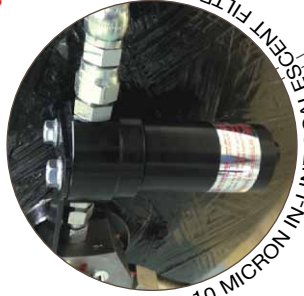
- Sales / Service Available at Authorized Ford Dealers / Installers Nationwide.
- Meets All Ford Engineering, Q185, FMVSS and Engine Durability Requirements.
- Only Highest OEM Quality Materials and Components Used.
- Equipped with Ford On-Board Computer Control System.
- Serviceable with Standard Ford Diagnostic Equipment.
- Systems Maintain All OBD-II Functionality.
- Will Start and Operate in Extreme Cold -20°.



CNG FUEL SELECTOR SWITCH



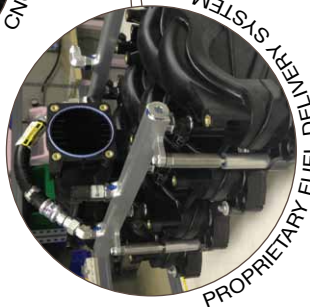
CNG FUEL GAUGE



10 MICRON IN-LINE COALESCENT FILTER



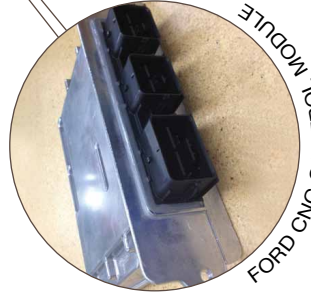
CNG TANK TOOL BOX COVER



PROPRIETARY FUEL DELIVERY SYSTEM



CNG FUEL RECEPTACLE



FORD CNG CONTROL MODULE



REAR VIEW WITH CNG STICKER



www.altecheco.com

Call Today (866) 727-0326 or E-mail: Sales@altecheco.com